

SIT  
LOSOPHY®

vivax

arte&D

**SIT**  
LOSOPHY®

# IN PUBLIC SPACES

04

## Divani e sedute modulari

---

### SOFAS AND MODULAR SEATING

- 04 — BERIRAMA
- 06 — IKEBANA
- 08 — ITACA
- 09 — ITACA ACOUSTIC
- 10 — DEXTER
- 12 — SAUDADE
- 14 — DOMINO
- 16 — MANTRA
- 18 — FORMAT
- 20 — ONDA

22

## Sedie e poltroncine

---

### CHAIRS AND TUB CHAIRS

- 22 — JAY
- 24 — ENKEI
- 26 — HOST
- 28 — LUNA
- 30 — BLITZ
- 32 — LAGOM
- 33 — YUGEN

34

## Attesa

---

### LOUNGE

- 34 — METROPOLITAN
- 35 — MAXIMA
- 36 — HAIKU
- 37 — DAMATRÀ

38

## Tavoli

---

### TABLES

- 38 — METAL TABLES
- 39 — MCF TABLES
- 40 — SIDE TABLES

42

## Sgabelli

---

### STOOLS

- 42 — JAY
- 43 — UPPER
- 46 — HOST
- 47 — NAMI

# BERIRAMA

DESIGN: ALESSANDRO CROSERÀ

DIVANI E SEDUTE MODULARI — SOFAS AND MODULAR SEATING



# IKEBANA

DESIGN: EDI & PAOLO CIANI DESIGN

DIVANI E SEDUTE MODULARI - SOFAS AND MODULAR SEATING



COMP-IK3



P1660V + EXIT

PUBLIC SPACES



COMP-IK5



COMP-IK4



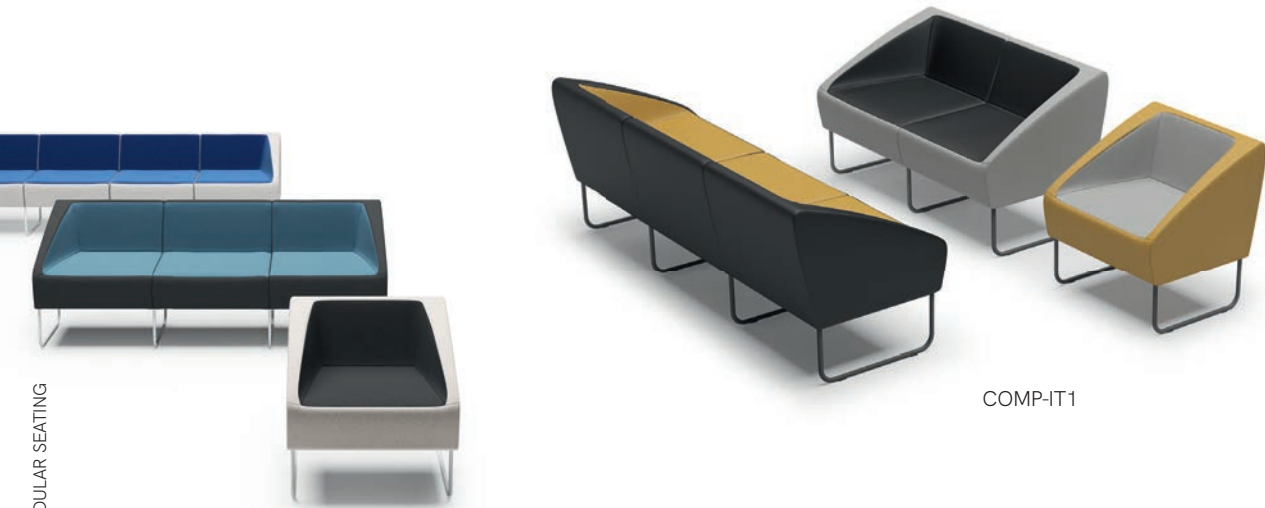
COMP-IK1



COMP-IK2

# ITACA

DESIGN: STUDIO OMEGA



COMP-IT1

# ITACA ACOUSTIC



B1605



PUBLIC SPACES

DIVANI E SEDUTE MODULARI — SOFAS AND MODULAR SEATING



B1606

# DEXTER



C8013V



C8011V



C8012V



# SAUDADE

DESIGN: EDI & PAOLO CIANI DESIGN



N8021V



N8022V



PUBLIC SPACES



N8023V



N8024V

DIVANI E SEDUTE MODULARI — SOFAS AND MODULAR SEATING



# DOMINO



COMP-D02



PUBLIC SPACES



COMP-D04



COMP-D03

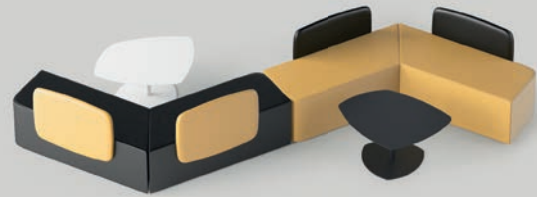


DIVANI E SEDUTE MODULARI — SOFAS AND MODULAR SEATING

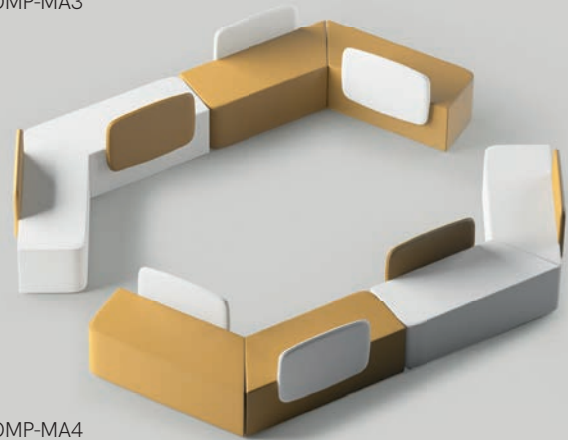
# MANTRA

DESIGN: NICOLA CACCO

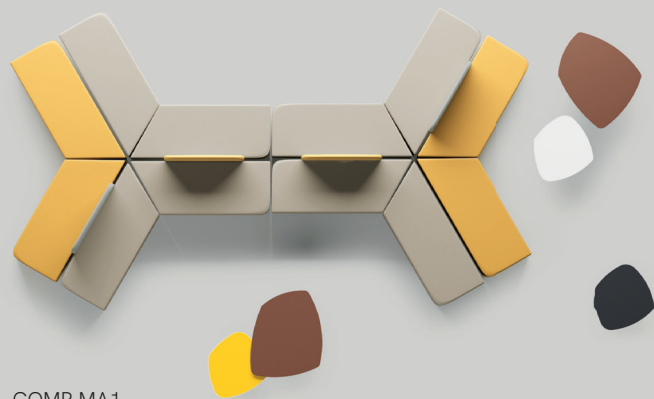
DIVANI E SEDUTE MODULARI — SOFAS AND MODULAR SEATING



COMP-MA3



COMP-MA4



COMP-MA1



COMP-MA2



PUBLIC SPACES



P1591V+SH4

P1591V+SH4+EXIT



P1594V

P1590V

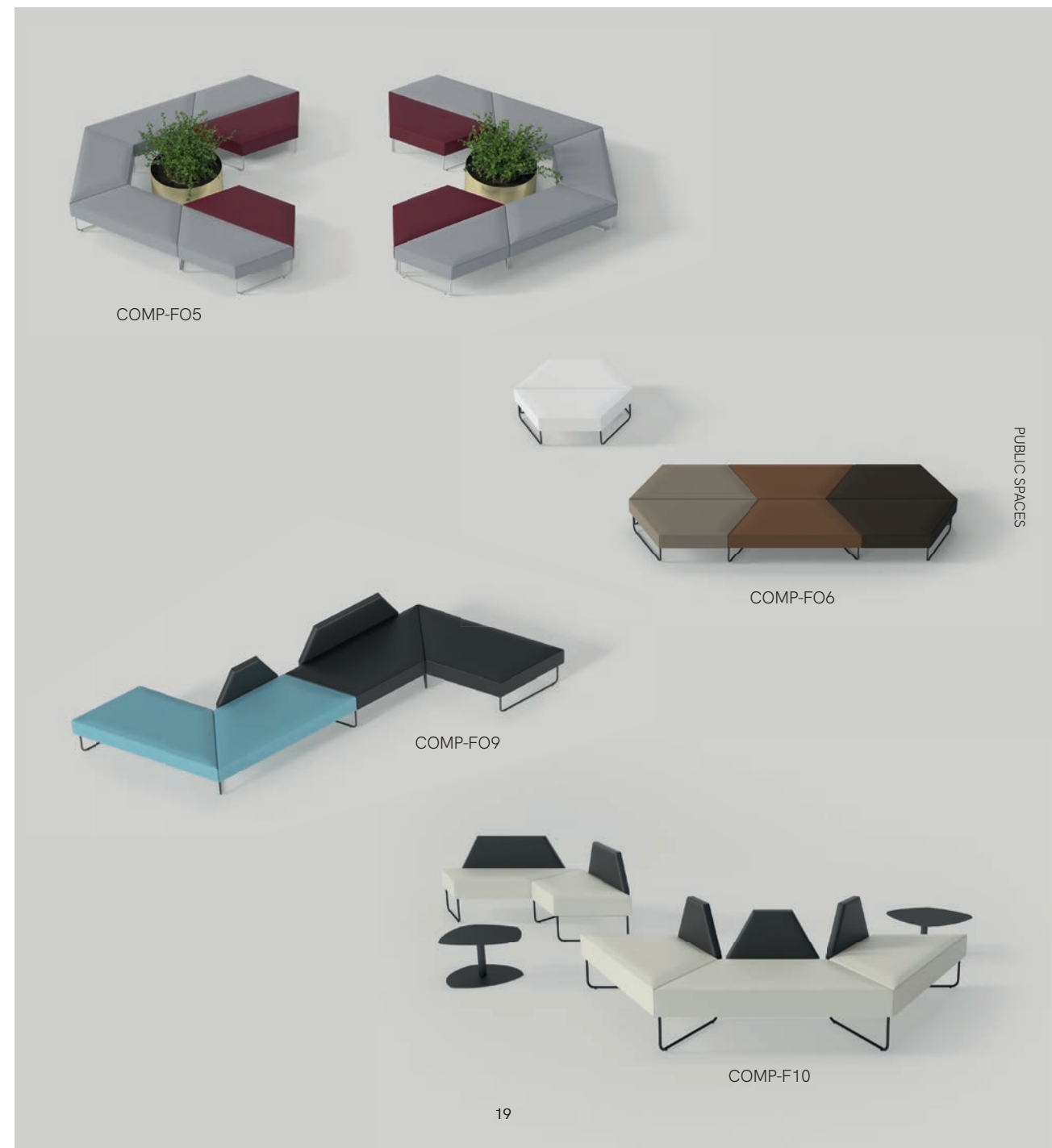


P1595V

P1596V

P1594V

# FORMAT



COMP-FO5

COMP-FO6

COMP-FO9

COMP-F10

DIVANI E SEDUTE MODULARI — SOFAS AND MODULAR SEATING

PUBLIC SPACES



# ONDA



B1582V

DIVANI E SEDUTE MODULARI — SOFAS AND MODULAR SEATING



B1585V

B1584V

B1581V



PUBLIC SPACES



# JAY

DESIGN: ZAKARIA KHALFAOUI



SEDIE E POLTRONCINE — CHAIRS AND TUB CHAIRS

PUBLIC SPACES

# ENKEI

DESIGN: EDI & PAOLO CIANI DESIGN

SEDIE E POLTRONCINE — CHAIRS AND TUB CHAIRS



CP1670V WCP

AT1670V WAT

VR1670V WVR

B1670V WN



CP1671V WCP



VR1671V WVR



B1671V WN



AT1671V WN



PUBLIC SPACES



B1673B WVR



N1672B WAT



N1673B WCP



# HOST



W-N1655V



B1658V      AT1658V      VR1658V      CP1658V



N1651B      N1652B      N1650B



VR1659V      AT1659V      CP1659V      B1659V      N1654G

SEDIE E POLTRONCINE — CHAIRS AND TUB CHAIRS

PUBLIC SPACES

# LUNA

SEDIE E POLTRONCINE — CHAIRS AND TUB CHAIRS



C1681B

C1684B



W-N1686V

W-N1685V



PUBLIC SPACES



N1680B

N1682B

N1683B



# BLITZ

SEDIE E POLTRONCINE — CHAIRS AND TUB CHAIRS



PUBLIC SPACES



C1622B

N1620B

W-N1624V



31

# LAGOM

DESIGN: PAOLO SCAGNELLATO & JEREMIAH FERRARESE



B225VWN+BRB200



B220V

N220V+BRN200

C225VWN+PS226



B225VWN+PS226



N220V+BRN200

SEDIE E POLTRONCINE — CHAIRS AND TUB CHAIRS



# YUGEN

DESIGN: PAOLO SCAGNELLATO & JEREMIAH FERRARESE



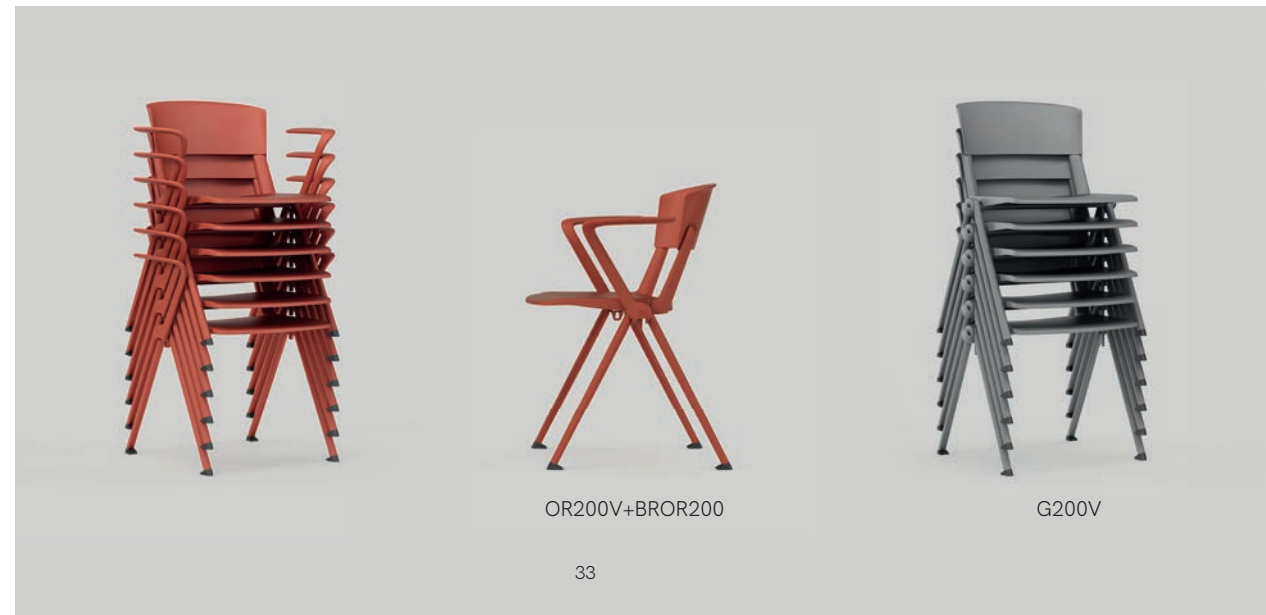
NERO  
black

BIANCO  
white

GRIGIO  
grey

CORALLO  
coral

PUBLIC SPACES



OR200V+BROR200



G200V

# METROPOLITAN

DESIGN: EDI & PAOLO CIANI DESIGN



C8054B B70

C8070AB B81



C8072V



W-N8072V



# MAXIMA



C8052V



C8051V



C8054B

# HAIKU



# DAMATRÀ



C1525B



PUBLIC SPACES



C8060AV



C8054B



C8060AB



C1524V



C1521B



C1522B

ATTESA — LOUNGE

# METAL TABLES

DESIGN: NICOLA CACCO



PV65B  
B501B



PV65AT  
B501AT



PV65MR  
B491MR



PV65GL  
B491GL

TAVOLI — TABLES



PV65B  
B501B

PV81AT  
B507AT



PV65MR  
B503MR

PV81GL  
B504GL



# MCF TABLES

DESIGN: NICOLA CACCO



PT60B  
B471C

PT60B  
B474C



PUBLIC SPACES



PQ70B

PT70W



PQ60W



PT60B



PQ70W  
B477C

# SIDE TABLES

DESIGN: EDI & PAOLO CIANI DESIGN



DESIGN: ALESSANDRO CROSERÀ



TAVOLI — TABLES



PV40MR  
B367MR

PV40AT  
B367AT



PV40GL  
B367GL

PV40B  
B367B

PUBLIC SPACES



P350WN  
B350N

# JAY

DESIGN: ZAKARIA KHALFAOUI



N21G

N20G-WN



N17V

N16V-WN



# UPPER

DESIGN: NICOLA CACCO



W19V

W18V-WN



B4G



GL4G

MR4G

AT4G

# UPPER

SCABELLI — STOOLS



C1G



C3V



C2G



C1GW-F



C2GW-F



PUBLIC SPACES



C3VW-F



# HOST



C1657V



C1656G



# NAMI



P6202B+BRP6201



# IN WORK SPACES

50

## Direzionali

---

### EXECUTIVE

- 50 — QUINTA
- 52 — METROPOLITAN
- 54 — MAXIMA
- 56 — HAIKU
- 58 — ADMIRAL
- 59 — OMNIA
- 60 — TAIT
- 62 — ELYSIA

64

## Operative

---

### TASK CHAIRS

- 64 — SPARK
- 66 — PIPER
- 68 — MIRAI
- 69 — MIRAI 24
- 70 — NAMI

72

## Sedie e collettività

---

### GUEST AND COMMUNITY CHAIRS

- 72 — YUGEN
- 74 — LAGOM
- 76 — ADAPTA
- 78 — SORI
- 80 — HOLA
- 82 — ZIP

84

## Rivestimenti

---

### COVERINGS

# QUINTA

DESIGN: MASSIMO COSTAGLIA  
& GIULIO MAZZANTI



C8100D



C8102G AR40



C8104V



N8103B



C8103B



WORK SPACES



C8101D



W-N8105V

N8104V



N8102G AR40

N8100D

N8101D



51



# METROPOLITAN

DESIGN: EDI & PAOLO CIANI DESIGN



C8071OG AR40



P8071OG



C8071B



C8072B B70



P8070OG



PP8070OG AR40

DIREZIONALI — EXECUTIVE

WORK SPACES

# MAXIMA



C8050D AR40



WORK SPACES

DIREZIONALI — EXECUTIVE



C8052D



C8053D



C8053B



C8051D B62



C8051B B70



# HAIKU



C8061B B70



C8062B



WCC8060OG B62 AR40



WCC8060OG AR40



CC8060OG AR40



C8060OG



WC8062B



WC8061B



WC8061OG

DIREZIONALI — EXECUTIVE

WORK SPACES

# ADMIRAL



C8090D B62 AR40



C8090D



C8092B B70

# OMNIA



GG9084OG AR40



GG9084OG



WORK SPACES

DIREZIONALI — EXECUTIVE



C8091D AR40



C8092B



G9083OG



G9082B



DIREZIONALI — EXECUTIVE

WORK SPACES



P3041D

P3040D



C3042V



C3045D



C3044D AR40





# ELYSIA



C6300DTR



C6301DTR



C6302V



N6300DTR AR40



N6301DTR



N6302V

DIREZIONALI — EXECUTIVE

WORK SPACES

# SPARK



OPERATIVE — TASK CHAIRS

WORK SPACES



P511D BRN3/S



P511DTR BRN4/S



B510DTR AR40 BRB4/S



P510D BRN3/S



P511DTR BRN4/S



B511D BRB3/S

# PIPER

DESIGN: S.I. DESIGN STUDIO



B60D AR6  
BRB60

P60D AR4  
BRP60



P60D AR40+SHP60  
BRP60



B60D+SHB60 AR40  
BRB60



B60D+SHB60  
BRB3/CN

P60D  
BRN3/CN



# MIRAI



P530D  
BRN3/S

P531D  
BRN4/S



B530DTR  
BRB4/S

B532DTR  
BRB3/S

WORK SPACES

OPERATIVE — TASK CHAIRS



P530DTR  
BRN3/S

P531DTR  
BRN3/S

P532DTR  
BRN3/S

## MIRAI 24



C533D

# NAMI

OPERATIVE — TASK CHAIRS



P6200OG+BRP6201



B6200OG+BRB6201



WORK SPACES



B6201B

N6201B

# YUGEN

DESIGN: PAOLO SCAGNELLATO  
& JEREMIAH FERRARESE

SEDIE E COLLETTIVITÀ — GUEST AND COMMUNITY CHAIRS



C201VBN+BRC203TADX+BRC202SX



N201VNR+BRN201DX+BRN202SX



NERO  
black

BIANCO  
white

GRIGIO  
grey

CORALLO  
coral



N211T2NR



N210T3+T

WORK SPACES



G200V+BRN200



B201VBN+BRB200



N201VNR+BRN200



B200V+BRC203TADX+BRC202SX



N212B



B213BBN

# LAGOM

DESIGN: PAOLO SCAGNELLATO  
& JEREMIAH FERRARESE



N225VWN+BRN220



N220V+BRN200



B220V



N220V+BRN200



C225VWN+PS226



C225VWN+PS226+BRC203TADX+BRC202SX



WORK SPACES



N222T3+T



N227T2WN



C222T3

# ADAPTA



SEDIE E COLLETTIVITÀ — GUEST AND COMMUNITY CHAIRS



C232TA



C230V



N231V



N233V



N230V



C233V



AV230V



N232TA

WORK SPACES



# SORI



N1400V



B1400V



WORK SPACES

SEDIE E COLLETTIVITÀ — GUEST AND COMMUNITY CHAIRS



N1401G



B1401G





# HOLA

DESIGN: S.I. DESIGN STUDIO



SEDIE E COLLETTIVITÀ — GUEST AND COMMUNITY CHAIRS

WORK SPACES



C1410V



N1410V

# ZIP

SEDIE E COLLETTIVITÀ — GUEST AND COMMUNITY CHAIRS



P1545R



WORK SPACES



P1545V



P1546 VTA

# COVERINGS

---

CATEGORIA 1    MADRID  
COVE

---

CATEGORIA 2    ANGEL  
ONE  
GAZEBO  
KING-FLEX

---

CATEGORIA 3    SECRET  
MINI  
CHILI

---

CATEGORIA 4    PELLE/LEATHER  
  
RETE MESH

---

CATEGORIA 5    STEP  
GO CHECK


---

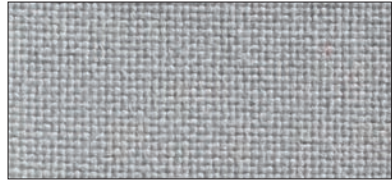
CATEGORIA 6    PELLE PANAMA

---

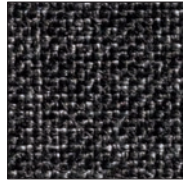
CATEGORIA 7    GRAIN  
FOCUS  
EXTREMA

## CATEGORIA 1 MADRID

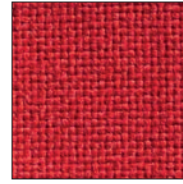

 ignifugo classe 1IM  
 fire proof class 1IM 



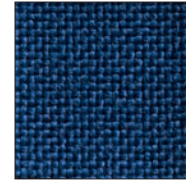
MD 515



MD 514



MD 502

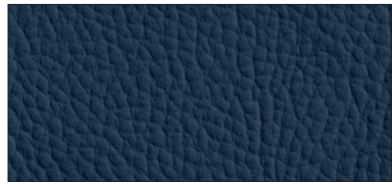


MD 510



MD 511

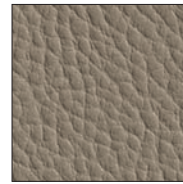
## CATEGORIA 1 COVE



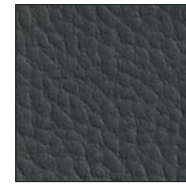
C 539



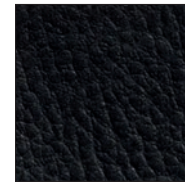
C 21



C 84




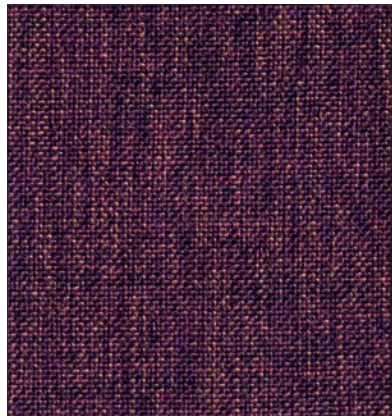
C 98



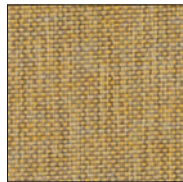
C 560

## CATEGORIA 2 ANGEL

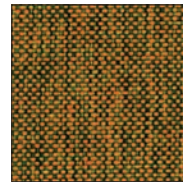
ignifugo classe 1IM  
 fire proof class 1IM 



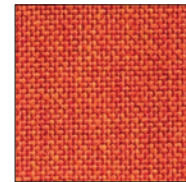
AN 38



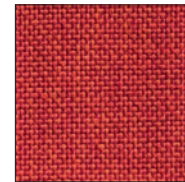
AN 46



AN 14



AN 30



AN 35



AN 53



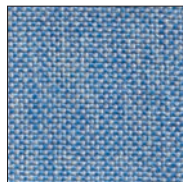
AN 50



AN 45



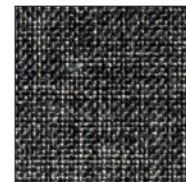
AN 20



AN 55



AN 39



AN 56

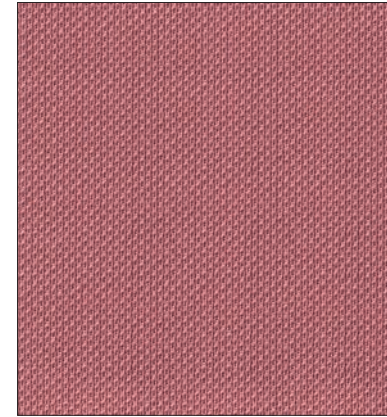


AN 57

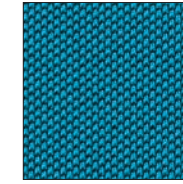
## CATEGORIA 2 ONE



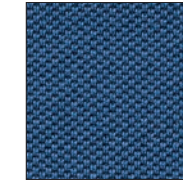
 ignifugo classe 1IM  
 fire proof class 1IM 



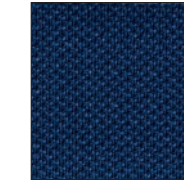
ON 4067



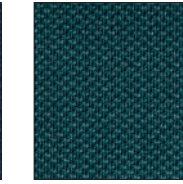
ON 6591



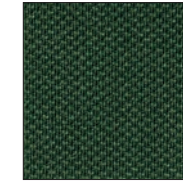
ON 6512



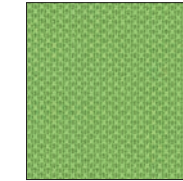
ON 6017



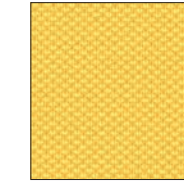
ON 7033



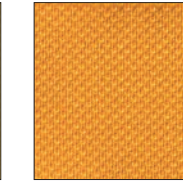
ON 7029



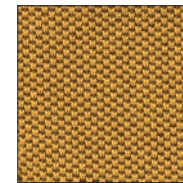
ON 7022



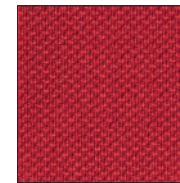
ON 3007



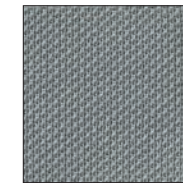
ON 3008



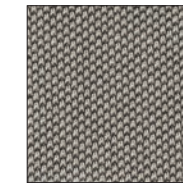
ON 3530



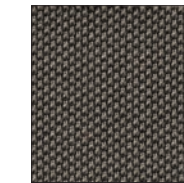
ON 4028



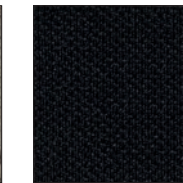
ON 8032



ON 1506




ON 2519



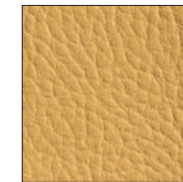
ON 8033

## CATEGORIA 2 GAZEBO

ignifugo classe 1IM  
 fire proof class 1IM 



S 4979



S 71



S 792



S 680



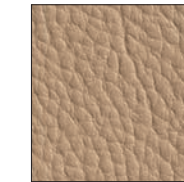
S 726



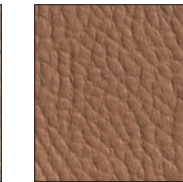
S 6



S 151



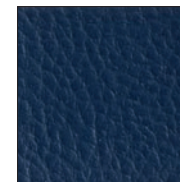
S 1194



S 1307



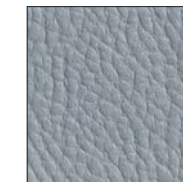
S 1809



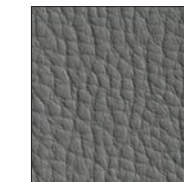
S 4947



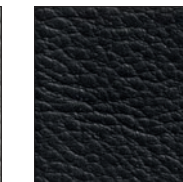
S 6985



S 4009



S 1955



S 991

## CATEGORIA 2 KING-FLEX

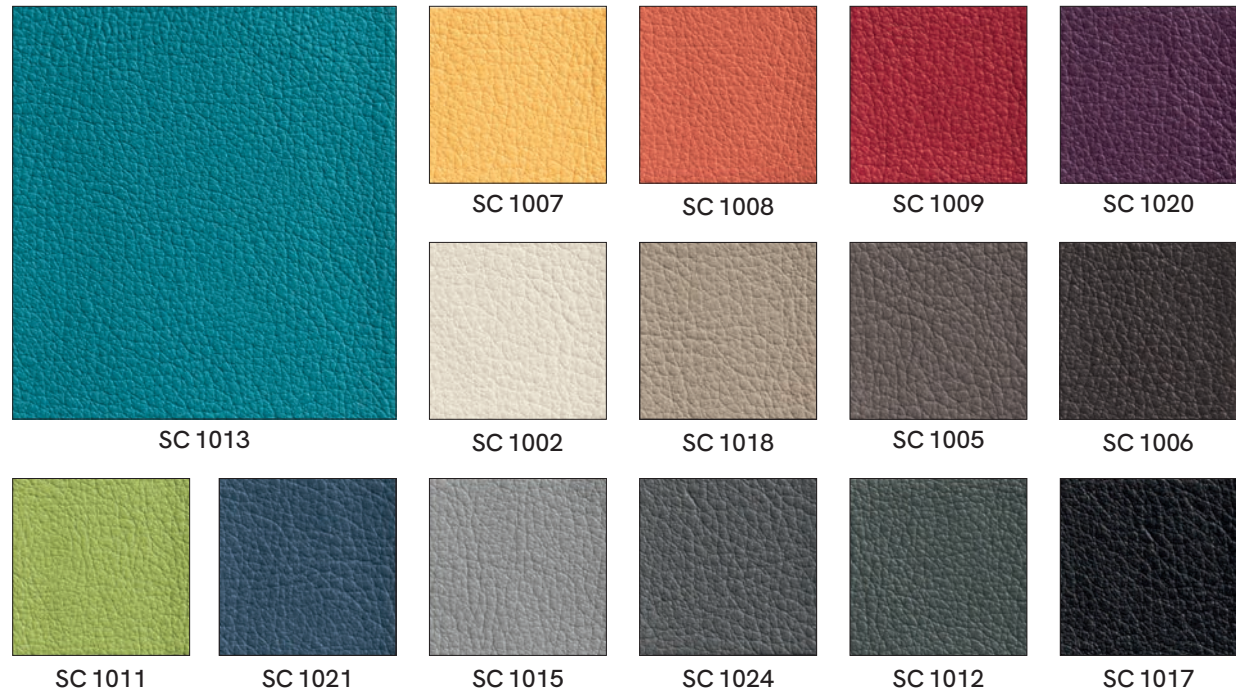


ignifugo classe 1IM  
fire proof class 1IM



## CATEGORIA 3 SECRET

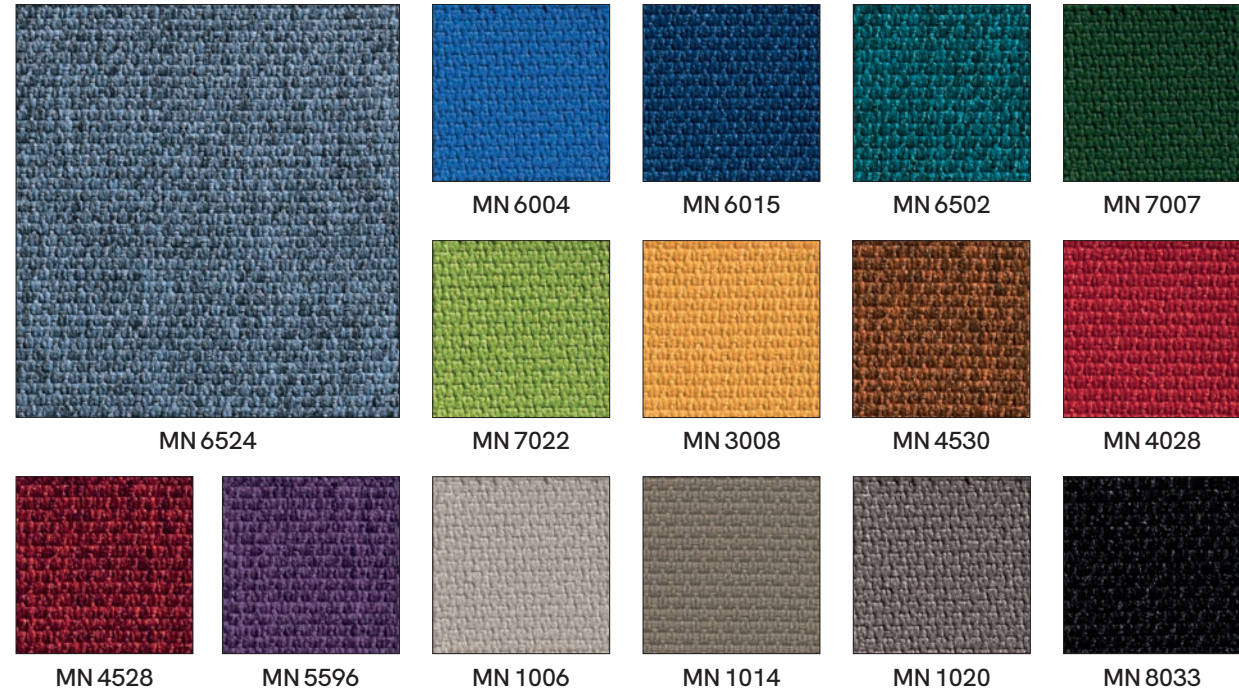
ignifugo classe 1IM  
fire proof class 1IM



## CATEGORIA 3 MINI



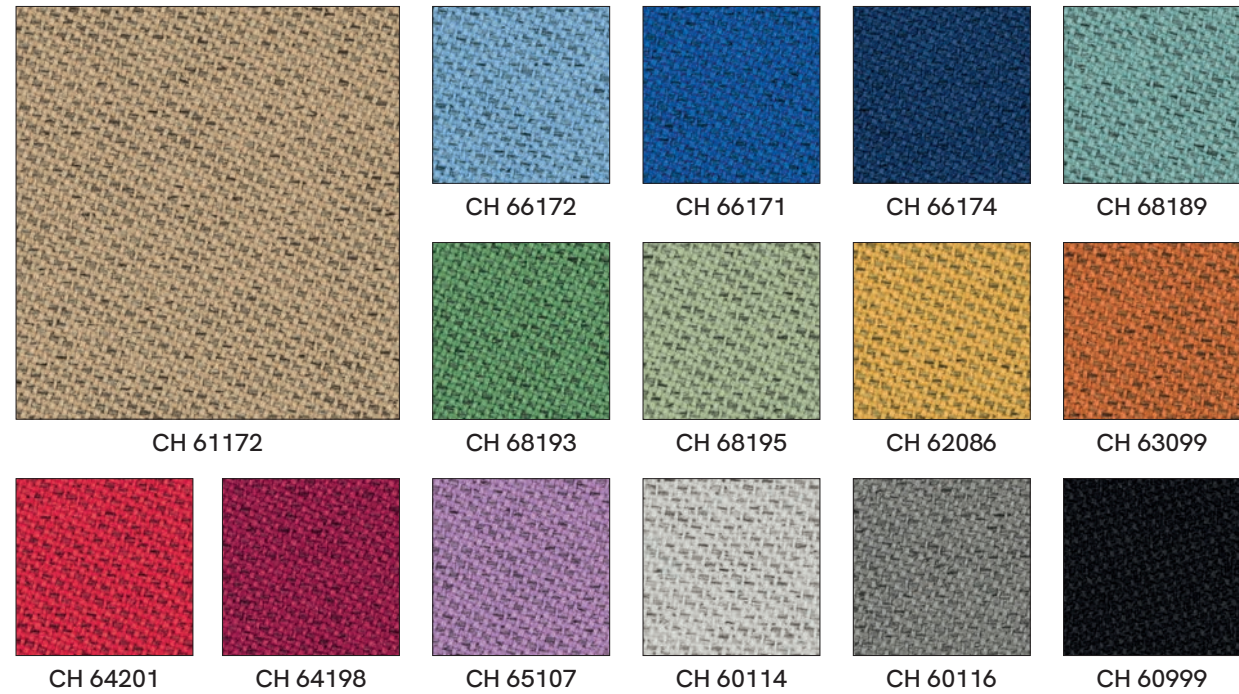
ignifugo classe 1IM  
fire proof class 1IM




## CATEGORIA 3 CHILI

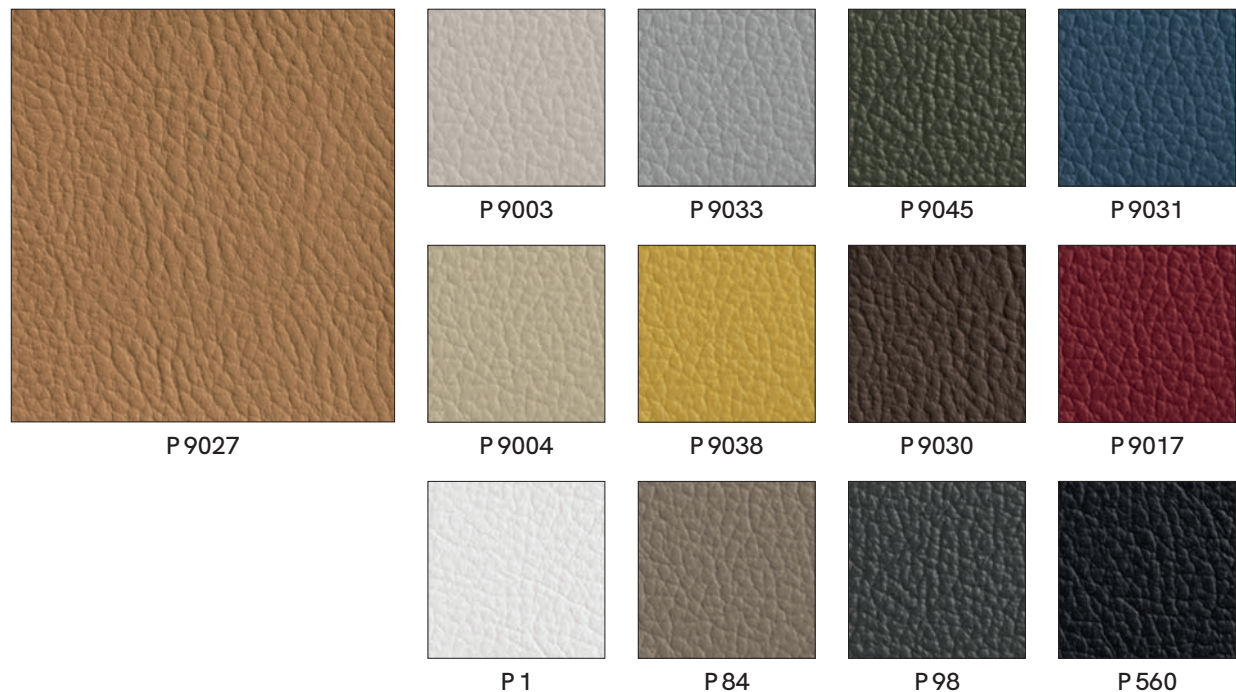


ignifugo classe 1IM  
fire proof class 1IM

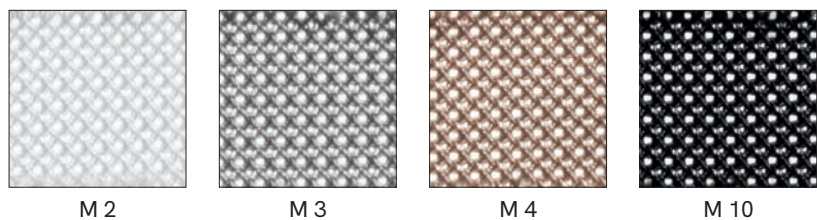


## CATEGORIA 4 PELLE/LEATHER

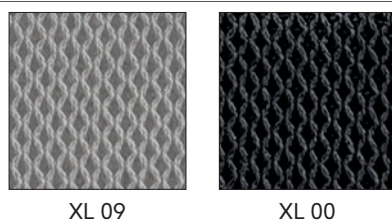
pelle vera  
genuine leather 



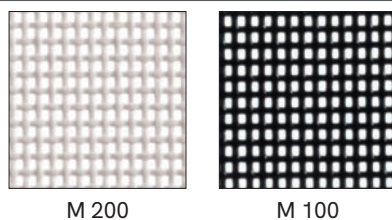
## RETE MESH



Disponibile solo per modello Spark  
Available for Spark model only



Disponibile solo per modello Hola  
Available for Hola model only



## CATEGORIA 1

### MADRID

± 230 g/mq  
100% PP polipropilene F.R.  
100% PP Polypropylene F.R.  
80.000 cicli martindale  
80.000 martindale cycles  
**Resistenza al fuoco/Flammability**  
CLASSE 1 IM - UNI 9175  
EN 1021 - 1/2  
BS 5852 /2 - CRIB 5  
California TB 117

### COVE

± 565 g/mq  
82% PVC - 7% Cotone  
11% Poliestere  
82% PVC - 7% Cotton  
11% Polyester  
50.000 cicli martindale  
50.000 martindale cycles

## CATEGORIA 2

### ANGEL

± 228 g/mq  
100% polipropilene F.R.  
100% polypropylene F.R.  
100.000 cicli martindale  
100.000 martindale cycles  
**Resistenza al fuoco/Flammability**  
CLASSE 1 IM - UNI 9175  
EN 1021 - 1/2  
BS 5852 /2 - CRIB 5  
California TB 117

### ONE

± 350 g/mq  
100% poliestere riciclato  
100% recycled polyester  
100.000 cicli martindale  
100.000 martindale cycles  
**Resistenza al fuoco/Flammability**  
CLASSE 1 IM - UNI 9175  
BS 7176  
EN 1021 - 1/2  
BS 5852 /2 - CRIB 5  
California TB 117

### GAZEBO

± 640 g/mq  
87,5% Polivinilcloruro plastificato -12,5%  
Cotone  
87,5% Plasticized polyvinylchloride -12,5%  
Cotton  
50.000 cicli martindale/50.000 martindale  
cycles  
**Resistenza al fuoco/Flammability**  
CLASSE 1 IM - UNI 9175  
BS 7176  
EN 1021-1/2  
California TB 117

## KING-FLEX

± 300 g/mq  
100% poliestere Trevira CS  
100% Polyester Trevira CS  
100.000 cicli martindale  
100.000 martindale cycles  
**Resistenza al fuoco/Flammability**  
CLASSE 1 IM - UNI 9175  
BS 7176  
EN 1021 - 1/2  
BS 5852 /2 - CRIB 5  
California TB 117

## CATEGORIA 3

### SECRET

± 540 g/mq  
76% PVC - 2% PU - 22% PES  
76% PVC - 2% PU - 22% PES  
60.000 cicli martindale  
60.000 martindale cycles  
**Resistenza al fuoco/Flammability**  
CLASSE 1 IM - UNI 9175  
EN 1021 - 1/2  
California TB 117  
Impermeabile/resistente ai  
raggi UV/adatto per esterno/  
waterproof /UV rays resistant/  
suitable for outdoor

### MINI

± 340 g/mq  
100% poliestere Trevira CS  
100% Polyester Trevira CS  
100.000 cicli martindale  
100.000 martindale cycles  
**Resistenza al fuoco/Flammability**  
CLASSE 1 IM - UNI 9175  
BS 7176  
EN 1021 - 1/2  
BS 5852 /2 - CRIB 5  
California TB 117

### CHILI

± 470 g/mq  
100% Poliestere riciclato post-consumo FR  
100% post-consumer recycled  
polyester FR  
60.000 cicli martindale 60.000  
martindale cycles  
**Resistenza al fuoco/Flammability**  
CLASSE 1 IM - UNI 9175  
BS 7176  
EN 1021 - 1/2  
California TB 117-2013  
BS 5852 Crib 5  
CA TB 117-2013  
NFP 92-503/504/505 M1  
DIN 4102 - B1

## CATEGORIA 4

### PELLE - LEATHER

100% vera pelle  
100% genuine leather

## RETE MESH

### M2 - M3 - M4 - M10

100% poliestere - martindale: 25.000 cicli  
100% polyester - martindale: 25.000 cycles

**Su richiesta/Upon request:**  
RETE NERA M10 disponibile  
in versione ignifuga (M10 FR)  
BLACK MESH M10 is also available  
with fire proof treatment (M10 FR)

**XL 00 - XL 09**  
Disponibile solo per modello Spark  
Available for Spark model only

± 370 g/mq  
100% poliestere - martindale:  
100.000 cicli +/-20%  
100% polyester - martindale:  
100.000 cycles +/- 20%  
**Resistenza al fuoco/Flammability**  
California TB 117

**M 100-M 200**  
Disponibile solo per modello Hola  
Available for Hola model only  
70% polivinile-30% PES  
martindale: 100.000 cicli  
70% polyvinyl-30%PES  
martindale: 100.000 cycles

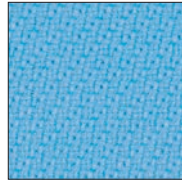
## CATEGORIA 5 STEP



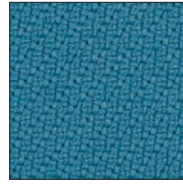
ignifugo classe 1IM  
fire proof class 1IM



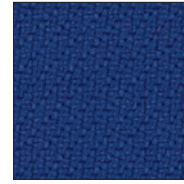
ST 61149



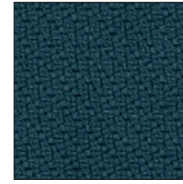
ST 67735



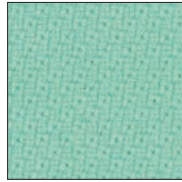
ST 67072



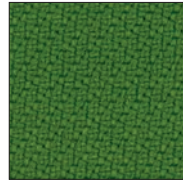
ST 65018



ST 68158



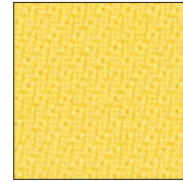
ST 68118



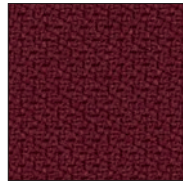
ST 68120



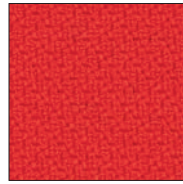
ST 68700



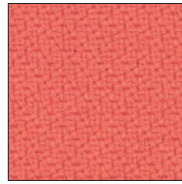
ST 62073



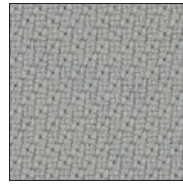
ST 64159



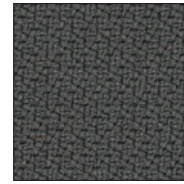
ST 64179



ST 64178



ST 60004



ST 60092



ST 60999

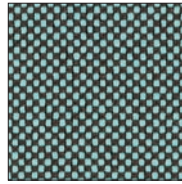
## CATEGORIA 5 GO CHECK



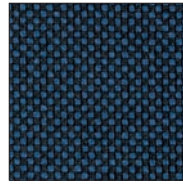
ignifugo classe 1IM  
fire proof class 1IM



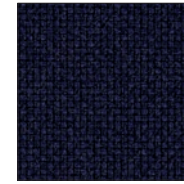
G 61143



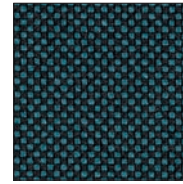
G 68168



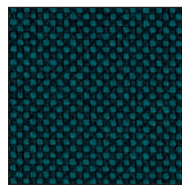
G 66139



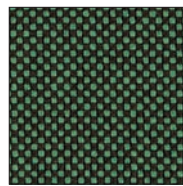
G 66134



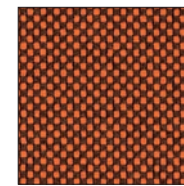
G 67071



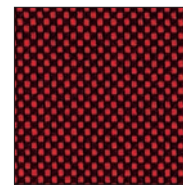
G 68152



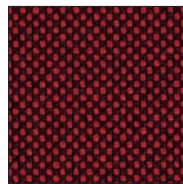
G 68169



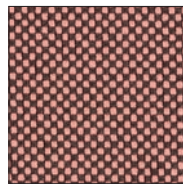
G 63080



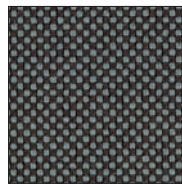
G 64175



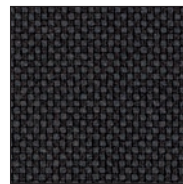
G 64172



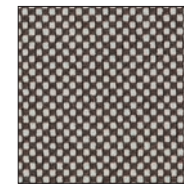
G 64183



G 60083



G 60084



G w



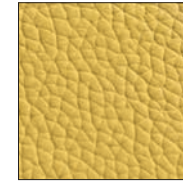
G 61139

## CATEGORIA 6 PELLE PANAMA

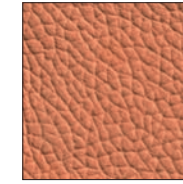
pelle vera  
genuine leather



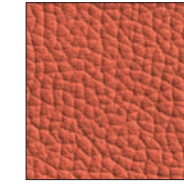
PN 5402



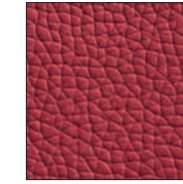
PN 5430



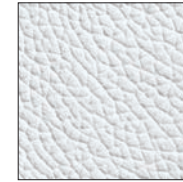
PN 5524



PN 5360



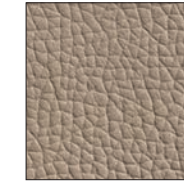
PN 5200



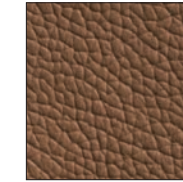
PN 5000



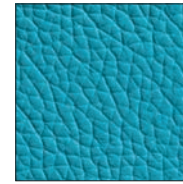
PN 5508



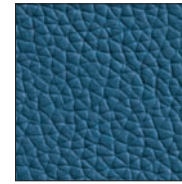
PN 5320



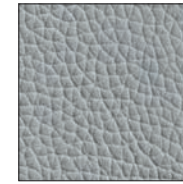
PN 5110



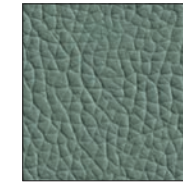
PN 5470



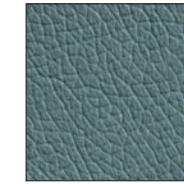
PN 5230



PN 5420



PN 5120



PN 5418

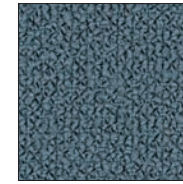


PN 5300

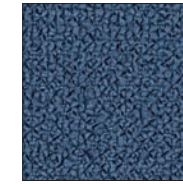
## CATEGORIA 7 GRAIN



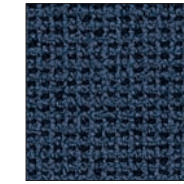
GR 61251



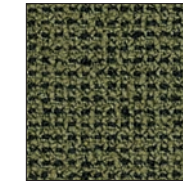
GR 66236



GR 66234



GR 66231



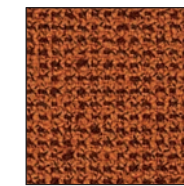
GR 68259



GR 62123



GR 63117



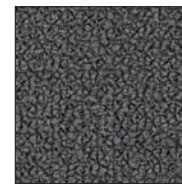
GR 63118



GR 64251



GR 60320



GR 60303



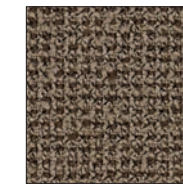
GR 60328



GR 61253



GR 64250



GR 61248



## CATEGORIA 7 FOCUS



ignifugo classe 1IM  
fire proof class 1IM



F 61040



F 66022



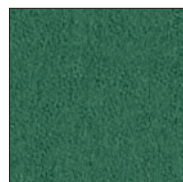
F 66023



F 66011



F66020



F 68048



F 68047



F 61035



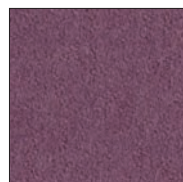
F 61036



F 63133



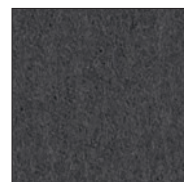
F 64041



F 65032



F 60211



F 60212



F 60999

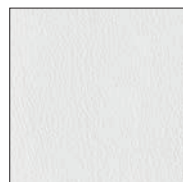
## CATEGORIA 7 EXTREMA

*Ultra-Fresh\**

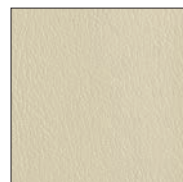
ignifugo classe 1IM  
fire proof class 1IM



X 1450



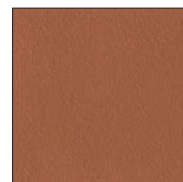
X 150



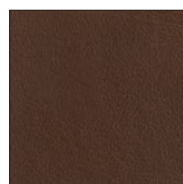
X 250



X 1150



X 3250



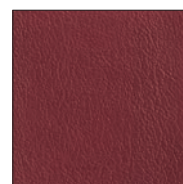
X 1250



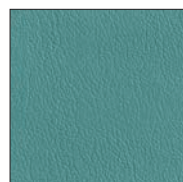
X 4050



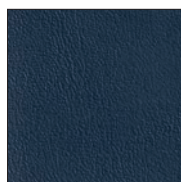
X 2750



X 950



X 4650



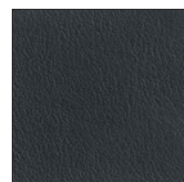
X 1950



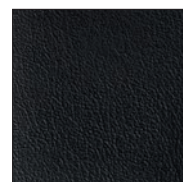
X 3650



X 4450



X 2150



X 2250

## CATEGORIA 5

### STEP

± 340 g/mq  
100% Trevira CS  
100% Trevira CS  
100.000 cicli martindale  
100.000 martindale cycles  
Resistenza al fuoco/Flammability  
CLASSE 1 IM - UNI 9175  
BS 7176  
EN 1021 - 1/2  
BS 5852 /2 - CRIB 5  
California TB 117

### GO CHECK

± 310 g/mq  
100% Trevira CS  
100% Trevira CS  
80.000 cicli martindale  
80.000 martindale cycles  
Resistenza al fuoco/Flammability  
CLASSE 1 IM - UNI 9175  
BS 7176  
EN 1021 - 1/2  
BS 5852 /2 - CRIB 5  
California TB 117

## CATEGORIA 6

### PELLE PANAMA

100% pelle fiore corretto  
100% corrected grain leather  
1,0 - 1,2 mm spessore  
1,0 - 1,2 mm thickness  
50.000 cicli - resistenza alla flessione  
50.000 cycles - flex resistance  
su richiesta disponibile trattamento  
di resistenza alla fiamma  
flame-resistance treatment available  
upon request

## CATEGORIA 7

### GRAIN

± 615 g/mq  
100% Trevira CS  
Tinta unita :92% poliestere riciclato post-  
consumo /8% poliestere  
Bicolore: 80% poliestere riciclato  
postconsumo / 20% poliestere  
Solid:92% post-consumer recycled  
polyester/8% polyester  
Duo-coloured:80% post-consumer recycled  
polyester/20% polyester  
100.000 cicli martindale  
100.000 martindale cycles  
Resistenza al fuoco/Flammability  
EN 1021 - 1/2  
California TB 117-2013

### FOCUS

± 660 g/mq  
100% lana New Zealand  
100% New Zealand wool  
100.000 cicli martindale  
100.000 martindale cycles  
100% tessuto riciclabile  
100% recyclable fabric  
Resistenza al fuoco/Flammability  
CLASSE 1 IM - UNI 9175  
BS EN 1021 - 1/2  
California TB 117-2013 ,  
BS 5852 /1,  
ASTM E 84 Class 2, ÖNORM A3800-B1-  
B3825-Q1 UK

### EXTREMA

± 480 g/mq  
63% PU - 29% COT - 8% PES  
63% PU - 29% COT - 8% PES  
150.000 cicli martindale  
150.000 martindale cycles  
Resistenza al fuoco/Flammability  
CLASSE 1 IM - UNI 9175  
EN 1021 - 1/2  
BS 5852 /2 - CRIB 5  
California TB 117  
Protezione antibatterica/Antibacterial  
protection

**Le tonalità di colore e le finiture illustrate vanno considerate puramente indicative. Verificare sempre la fattibilità dell'abbinamento finiture consultando il listino.**

The colour shades and finishes illustrated herein are to be considered purely indicative. Always check the feasibility of finish combinations by consulting the price list.

# SIT LOSOPHY®

---

Via Umbria, 4 - 35043, Monselice (PD) Italy  
**sitlosophy.com**



## **EXPORT DIVISION**

ARTE & D S.R.L.  
info@arte-d.it  
T. +39 0429 782200



## **DIVISIONE ITALIA**

ELLECI OFFICE S.R.L.  
info@ellecioffice.it  
T. +39 0429 784599

